

BISSELL PET FOUNDATION®
Until every pet has a home.

because of you...
they're

safe,
healthy
& loved.





Cathy Bissell greets a pet at a BPF-funded free community vaccine clinic in St. Landry Parish, Louisiana.

From Our Founder



“Because of you, pets who were once at risk are now safe, healthy & loved. Let’s continue to save lives together!”

As animal lovers and advocates, we at BISSELL Pet Foundation believe every pet deserves a happy and secure life, and we know you do too. We are committed to ending pet homelessness, but sadly, it’s no secret that 2023 has been filled with unprecedented challenges.

This year, we have witnessed a disturbing trend of large-scale seizure and surrender cases involving failed “rescues,” puppy mills and other unimaginable situations putting dogs and cats at risk. These cases often leave hundreds of pets, many requiring extensive medical attention, to be taken into the already overburdened shelter system. Additionally, parts of the country experienced natural disasters impacting both owned and homeless pets, while at the same time, access to veterinary care and rigid housing restrictions resulted in an increase in pet surrenders.

While these challenges might seem overwhelming, they have only strengthened our resolve not to turn our backs on the incredible dogs and cats in shelters nationwide waiting to experience love and care.

This is where YOU come in. Your generosity and compassion have made a remarkable difference for homeless pets across the country. Because of YOU, dogs and cats who were once at risk are now safe, healthy, and in loving homes.

As you read through the following pages, I hope you are inspired by the stories and the number of pets whose lives you helped save. Your generosity not only provides immediate assistance to homeless pets, but also contributes to a larger, long-term vision where every pet has a loving home.

With your continued support, we can save more pets in more communities. They are counting on YOU!

Until every pet has a home,

Cathy Bissell

Cathy Bissell
Founder, BISSELL Pet Foundation

Your Support + Our Programs = Lives Saved

BISSELL Pet Foundation is a national animal welfare organization dedicated to ending pet homelessness through our pet adoption, transport, spay/neuter, vaccination, microchipping, and crisis and disaster response programs.

Your support saves lives. To see BISSELL Pet Foundation's lifesaving work in your state and for a complete list of our grant impact, please use the QR code.

706,527 pets impacted since November, 2011



Because of the various lifesaving programs we offer and the urgency with which they are needed, demand outpaces our ability to fund every year.



Where does your donation go?

Unlike other national animal welfare organizations, every dollar you donate is fully utilized to impact pets through BPF's lifesaving programs. Because BISSELL Inc. is dedicated to helping pets, the company absorbs administrative costs for BPF, enabling your full contribution to go directly to pets in need.

\$0 Executive Compensation

\$0 Staff Salaries

\$0 Offshore Accounts

\$0 Fundraising and Advertising

100% Saves Pets



All pets featured throughout this report are from shelters or impacted by one of our community programs.



because of you...
they're safe

Our Programs

Crisis and Disaster Transport Animal Incident Management



Your generous support saves pets from urgent situations by enabling our Animal Incident Management (AIM) team to respond to crises ranging from natural disasters to disease outbreaks and puppy mill cases, even in the most difficult situations. In February, BPF partnered with Animal Search and Rescue (ASAR) to create AIM to address the drastic increase of crisis and disaster incidents and the industry's decline in resources to respond. Gifts also fund the transport of pets from overcrowded shelters to rescue partners with adopters seeking pets. Because of you, pets are safe and lives are saved.

Responding to the Unimaginable

Missouri

Harper Grace was one of 225+ dogs rescued in June when BPF's Animal Incident Management (AIM) team partnered with National Mill Dog Rescue after authorities pressured a large-scale puppy mill breeder to shut down and a separate commercial breeder went out of business. Many of the dogs lived in unsafe, crowded conditions and, as a result, suffered from a multitude of health issues.

BPF arranged care and transport via air and ground within our National Shelter and Rescue Partner Network. Thanks to your gifts, all the dogs arrived safely at their destinations, including six-year-old Harper Grace, who was visibly anxious, had no experience with human

interaction, and had stained fur from living in a filthy cage. Happily, she is now experiencing love for the first time in her life.

"Harper is now a completely different dog! Almost immediately, she started improving. She's the sweetest girl, and we are so lucky to have found her!"

Harper Grace's Adopters



Harper Grace, one of 225 dogs rescued from a Missouri puppy mill.



Two of more than 130 dogs rescued in Iowa.

Iowa

In August, BPF's AIM team sprang into action to help 130 dogs from a suspected puppy mill. The situation escalated when the Department of Agriculture asked Iowa City Animal Shelter to assist with the seizure. Taking in 130 pets at once is a nearly impossible task at a time when shelters across the country are all full. Thanks to your generosity, BPF was able to provide funding for medical support, transport and placement within our nationwide network of partners to give the dogs their best chance to find loving homes.

Donate to keep pets safe:
[bissellpetfoundation.org/donate](https://www.bissellpetfoundation.org/donate)



Hawaii

BPF's Animal Incident Management (AIM) team received an urgent call pleading for help in August - this time from the Island of Maui - after the deadliest U.S. wildfire event in a century. Thanks to your support, BPF not only coordinated resources and operations to support pets and people for Maui Humane Society's emergency management efforts, but also supplied a compassion fatigue workshop and mental health resources for shelter staff, as well as deployed a contracted veterinarian to provide desperately needed spay/neuter services.

Lahaina, Maui



Mississippi

In July, BPF's Animal Incident Management team partnered with Animal Rescue Corps to save approximately 70 dogs who were left to slowly suffer and die across two properties owned by a failed "rescue" in Mississippi.

The dogs were extracted not a moment too soon - they were found in horrific condition in the woods, fighting to survive during a record heat wave. Those who were still alive had no food or water, and very few had shelter. Many of them were tied to trees with no escape from aggressive dogs or predators. Just feet away were the bodies of the dogs who did not survive.

We knew this would be a challenging case because of the severe neglect these dogs experienced, but thanks to your support, they were placed with trusted BPF shelter and rescue partners. Once subjected to unbelievable cruelty, these dogs received the chance to have happy futures because of you.

“Animal Rescue Corps called in BPF’s Animal Incident Management team because they knew we’d be able to provide critical funding for this emergency operation, coordinate on-scene volunteer support from BPF’s National Shelter Alliance and manage placement with trusted shelter and rescue partners.”

Cathy Bissell Founder, BISSELL Pet Foundation



One Survivor's Happy Tale

In his short life, Rocky has survived more than any dog should ever have to endure in a lifetime - he is one of more than 70 dogs from the Mississippi cruelty case. After receiving treatment and being cleared for transport, he was welcomed with open arms by SPCA of Wake County, NC, where they worked tirelessly to ensure he had a happy future. In September, everyone's wish came true when Rocky found an adventure buddy, constant companion, best friend and loving home.



Help Us Save Them

Sadly, calls for help are increasing, and the number of pets needing assistance has been overwhelming. BPF's Animal Incident Management team responds because of our ability and knowledge about how to handle crises like these, both in size and complexity. We believe every pet deserves its best chance to find a loving home and because of YOU, we can respond immediately when pets are in crisis.



Mississippi



BPF's AIM team coordinated the transport of pets to safety as fire blazed through Beauregard Parish, Louisiana.

Emergency Transport

Louisiana

In late August, BPF's AIM team responded quickly to Beauregard Parish Sheriff's Office Animal Control after a fire in the parish caused a mandatory evacuation of several residents and businesses. Fortunately, the shelter was not in the fire's path. Thanks to your support, BPF was able to transfer 36 homeless dogs from the shelter to make room for evacuees' pets and provide industrial fans to improve air quality for owned livestock temporarily housed at the community's covered arena.

Vermont

When disastrous flooding overwhelmed Vermont in July, BPF took immediate action to transport pets. Because Montpelier was already underwater and the reservoir above it was expected to breach, there were concerns about the flooded area dramatically expanding. The nearby Central Vermont Humane Society staff was able to care for pets in their shelter. However, they anticipated a crisis with people temporarily surrendering their pets because of the devastation and decreased potential adopters.

BPF met the urgent need and quickly emptied their shelter by coordinating the transport of cats and dogs from Montpelier to Massachusetts.

You give BPF the ability to respond when we receive urgent calls from our shelter partners.



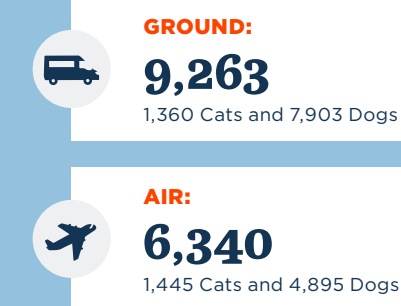
Routine Transport

Your gifts save lives by enabling BISSELL Pet Foundation to relocate adoptable pets from overcrowded shelters to areas of the country where there is available space and greater opportunity for adoption. BPF handles logistics, including coordinating ground and air transport, navigating state-level compliance, vaccines, health certificates and placement with destination shelters nationwide.

3,953 pets transported

January 1-September 30, 2023

Transport Since July, 2020



because of you...
they're healthy

Our Programs

- Veterinary Services
- Spay/Neuter
- Vaccines
- Microchipping
- Healing Heartworm
- RescueLove
- Grateful Pet



Your gift enables lifesaving care to help pets find and stay in loving homes. You prevent unplanned litters through spay/neuter initiatives and our contract veterinarian program. Donations also provide vaccines and heartworm treatment. You help individual pets needing extra care through our RescueLove and Grateful Pet programs. And every pet touched by BPF's programs gets microchipped. Because of you, pets are healthy, adoptable and have their best chance for a happy future.

Veterinary Services

“Fix the Future”

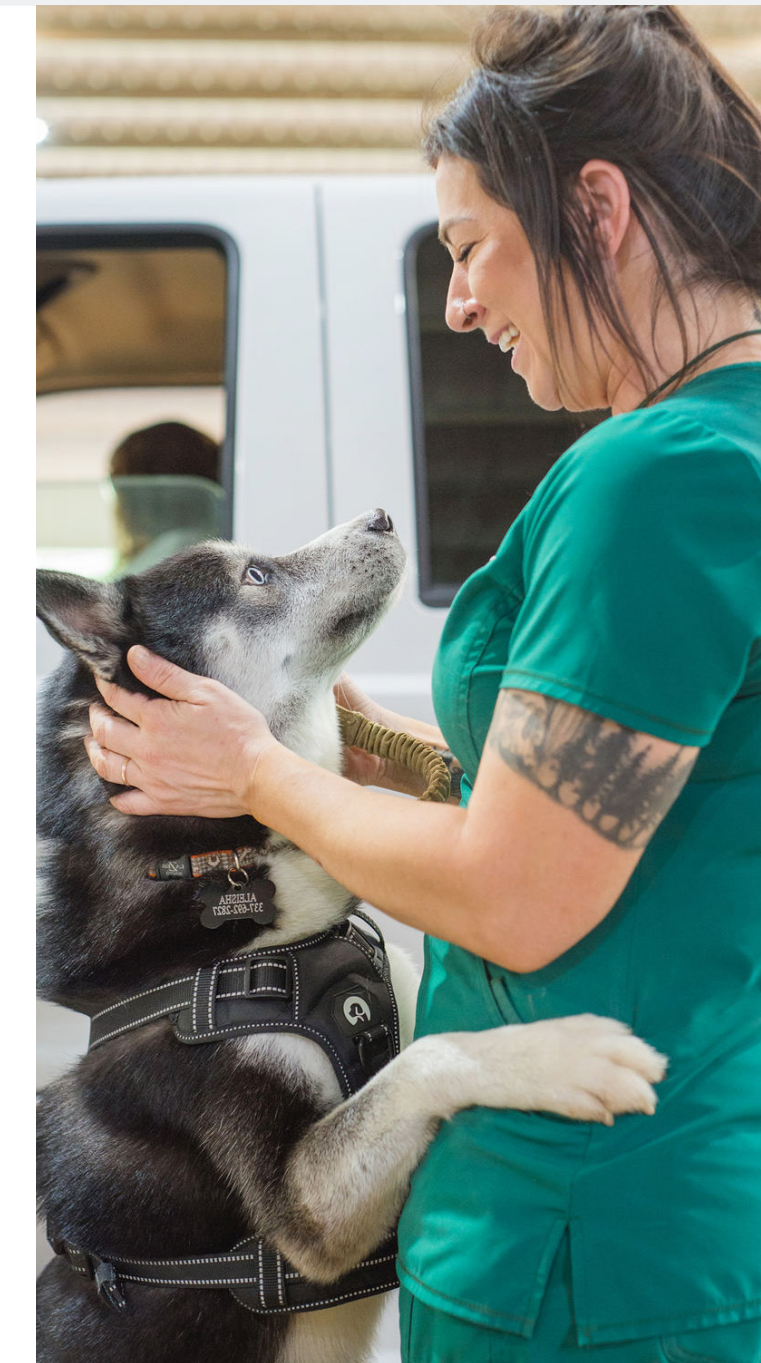
Right now, animal shelters across the country are feeling the impact of the veterinarian shortage. Many shelters are hundreds of spay/neuter surgeries behind schedule and many communities don't have access to veterinary care. To address this dire need, BISSELL Pet Foundation launched the “Fix the Future” initiative to deploy veterinarians to underserved shelters and communities through our Veterinary Services program. BPF contracts with numerous veterinarians to provide spay/neuter, vaccines and microchips to prepare shelter pets for adoption and offers free clinics to provide access to communities in need.



“Fix the Future” also includes a voucher program to offset the cost of spay/neuter in communities where BPF has partnerships with local veterinarians. The BPF-funded vouchers remove the financial barrier for pet owners, allowing pets to stay in homes without unplanned litters, which reduces the burden on animal control and shelters.

BPF's Operation Sato: A Spay & Neuter Collaboration in Puerto Rico

In early November, **BPF teamed up with The Sato Project of Puerto Rico to spay/neuter the island's growing stray dog (sato) population, currently estimated at 500,000.** BPF's Veterinary Services program led the effort by sending a group of veterinarians and technicians to provide high-volume, high-quality spay/neuter procedures with **five active surgery tables to impact 1,500 pets.** An incredible team flew from throughout the U.S. to participate in this lifesaving initiative. Most of the equipment purchased by BPF remained on the island, allowing additional island pets to be spayed/neutered in between large, high-volume events.



One of the many hundreds of community cats impacted through a BPF Trap-Neuter-Return grant.



Spay & Neuter Strategies

BISSELL Pet Foundation supports a variety of spay and neuter strategies to prevent unwanted kittens and puppies from entering our nation's shelters.

Controlling Community Cats

Trap-Neuter-Return (TNR) is the most humane and effective method for controlling and eventually reducing outdoor cat populations. Left unsterilized, the outdoor cats and their kittens would continue reproducing, potentially overwhelming a community with thousands of unwanted cats.

This year, BPF funded TNR programs to impact over 2,000 cats in 4 states and internationally in Eastern Europe, France, and the Netherlands.

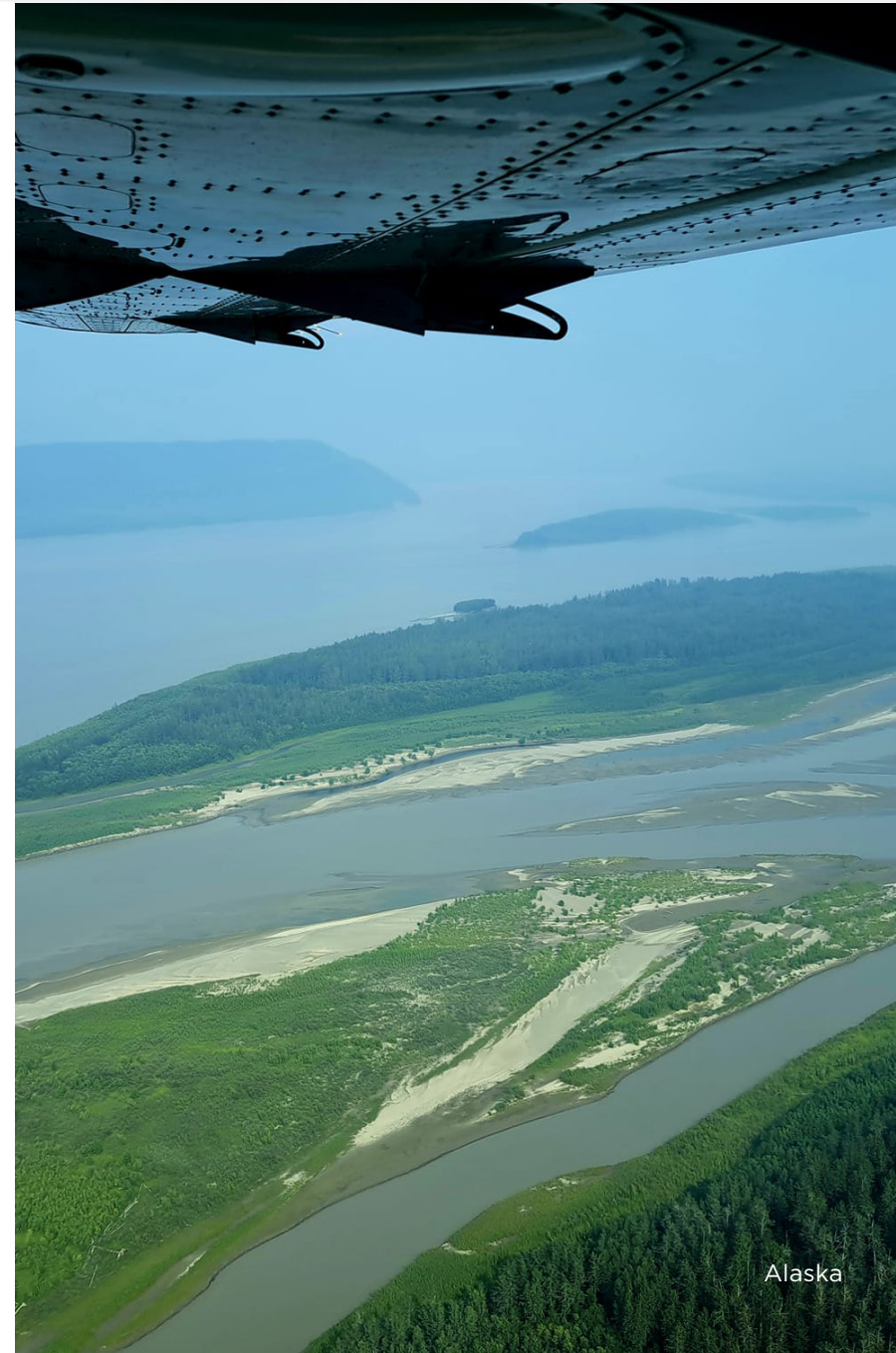
Because of you, BISSELL Pet Foundation is able to adapt our spay/neuter program to address evolving challenges and disrupt traditional models that are not meeting the current need. Our critical work to address pet homelessness would not be possible without your support.

Spay/Neuter Impact

10,448 pets January 1–September 30, 2023

283,839 pets Since 2011

Donate to keep pets healthy:
bissellpetfoundation.org/donate



Remote Outreach: Alaska

BPF also has critical initiatives to reach parts of the country that have no traditional veterinary services and are outside of the scope of our contract veterinary program. Since 2021, we have partnered with Alaska Native Rural Veterinary, Inc. to provide spay/neuter and vaccines to the most distant parts of Alaska. These clinics are a major undertaking, with supplies and veterinarians flown in and families coming from great distances to access lifesaving resources for their pets. Thanks to you, in 2023, we have reached 226 pets with this important program, with more clinics planned before year-end.



Vaccination Clinics and Support

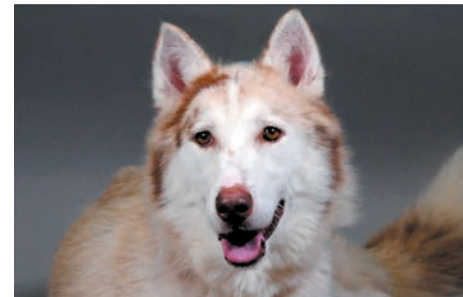
All year long, BPF hosts free community vaccine clinics and works to supply underfunded shelters with vaccines for their shelter population and often, for their community's pets. By preventing life-threatening illnesses such as distemper, parvo and rabies, our vaccine program is a proven solution to keep shelter and community pets healthy. Without these resources, owned pets might end up in the local shelter, and shelters could face large outbreaks.

In April, the BPF team and dedicated partners were on the ground for a free vaccine clinic in **Opelousas, Louisiana, where we touched nearly 300 community pets** in an area where cost of care is a barrier. Witnessing the clinic's impact and the gratitude of pet owners was remarkable! **Additional communities where BPF funded large-scale clinics in 2023 include Amarillo, Texas, and Chatham, North Carolina.**



Healing Heartworm

Like most dogs, Jessie loves to run, snuggle, and play; however, she was heartworm positive when she arrived at the shelter. While heartworm disease is curable, the cost of treatment deterred potential adopters. Earlier this year, BPF provided Houston SPCA with a Healing Heartworm grant to support Jessie's treatment. Happily, she is now part of a wonderful family and living her best life. Thanks to your generosity, we are working to provide low-cost treatment to hundreds of dogs like Jessie.



Since 2021, the Healing Heartworm program has provided 22,643 doses of heartworm medication, both preventative and treatment, for pets in shelters.

Grateful Pet

Your gifts support shelter pets who need a little extra help getting ready for adoption through BPF's Grateful Pet program. Because of you, issues like surgery, rehabilitation, major dental work, and other treatments are covered to help pets receive a much-deserved second chance.

Stella

A Good Samaritan found Stella limping on the street, took her in and provided care for her severely broken leg before she made her way to Cause 4 Paws in Toronto in February. As soon as Stella arrived in Canada, the staff determined surgery was needed to relieve her pain and give her the best chance to find a home. Cause 4 Paws wanted to help Stella but lacked the funding to repair her leg. BPF supported Stella with a Grateful Pet grant to make her life-changing surgery possible. Happily, she recovered and was adopted in March!

"We are THRILLED to announce that Stella been adopted! She shares a home with two human siblings and a mom and dad who love her more than words can describe! A HUGE thanks to everyone who helped her find her way to her wonderful forever home - especially to BISSELL Pet Foundation for fully sponsoring her surgery!"

Cause 4 Paws Toronto



Coco

Coco, a handsome senior cat, was suffering from periodontitis when Animal Aid for Vermillion Area (AAVA) of Abbeville, LA, rescued him from a municipal shelter. Coco's severe gum infection was causing him significant pain, and the team at AAVA knew he deserved a second chance but needed support for his care. Thanks to BPF's Grateful Pet program, Coco received a complete oral extraction, making him more comfortable and adoptable. Shortly after his surgery, Coco found a loving family to call his own, and we couldn't be happier for him!



RescueLove

BPF's RescueLove program provides emergency funding to help pets recover from life-threatening injuries or illnesses. Often, these pets are found in critical condition. Your contributions support essential services to save pets' lives and give them a chance to find a loving home.

Maria

Maria was found as a stray, very pregnant and needing urgent dental surgery from being shot in the mouth. Emergency funding from RescueLove enabled Maria to receive immediate care. After recovery, BPF placed her on a transport flight, and she was adopted as soon as she arrived at Broome County Humane Society in New York. She has an ideal new life where she is the leader of a pack in a loving family.

“Maria is a wonderful lady. The squirrels she likes to chase may not agree. We have 3 1/2 acres of yard and she uses every bit of it. She is happy and queen of the house. Thank you for saving her, she is truly special.”

Maria's Adopter



Hope

Hope was left for dead and found by St. Landry Parish Animal Control in May. She had been shot with BBs, her ears were cut off, she had a broken jaw and dislocated hip, she had been starved, was infested with fleas, tested positive for heartworm, and was severely dehydrated with ulcers in her mouth. With emergency funding from our RescueLove program, BPF was able to support Hope's lengthy hospital stay and surgical costs at Lafayette Veterinary Clinic. Cathy Bissell never gave up on her. Now, Hope is thriving and has been adopted by a clinic staff member!



Mel

Mel was picked as a stray, clearly struggling in pain to walk. He had been shot in the knee and was heartworm positive. There was no way to repair the shotgun damage surgically, so his leg was amputated. BPF's RescueLove program made his surgery and recovery possible. He is happily adjusting and will soon be available for adoption.



Ranger

Ranger was caught in a claw trap when he was rescued. No one knows how long this sweet, young, malnourished dog had been struggling. His severe pain was evident; examination revealed he had been shot, had a broken femur, and a fractured neck, among other serious issues. Ranger has made an amazing recovery and now lives in the loving care of the Bissell family.



Frank

Frank was discovered with a broken leg after being hit by a car. His complicated injury required a specialist who could stabilize his knee joint after his cranial cruciate ligament ruptured. RescueLove made his surgery possible, and while Frank was recovering, a veterinary student fell in love with him and ultimately adopted him.



Helen

When Helen was found on a gravel road after nearly being hit by a truck, it was hard to believe she was a dog and more astounding that she was alive.

She was starved, covered in sores, severely sunburned, and her ears had been cut off. In her weakened state, she would not have survived much longer. Critical funding from RescueLove provided two blood transfusions and urgent skin and medical treatments, while veterinary staff and a wonderful foster mom healed her soul with love. Because of you, Helen's life has changed forever.



because of you... they're loved

Our Programs

Empty the Shelters



During this time of unprecedented challenges, your generosity gives homeless pets their best chance to find loving homes through Empty the Shelters. Empty the Shelters, the largest funded national adoption event, makes adoption affordable for prospective pet owners while supporting participating organizations with reimbursement for each pet adopted. Because of you, pets who had been in shelters are now loved and space is available for other pets in need.

May & July “Empty the Shelters” Recap

With slowed adoptions, longer lengths of stay and increasing housing restrictions, shelters have never been more desperate to find lifesaving solutions. BPF’s May and July Empty the Shelters events not only helped more pets than ever before find loving homes, but also created space for other pets in need. Heartwarming adoption stories featured pets of all breeds, abilities, and ages receiving second chances. Extra special adoption moments included pets who had been waiting months or even years for adoption, bonded pairs of pets going home together, and senior cats and dogs getting a chance to live out their Golden Years with adoring families.

Spring May 1-15

348 shelters in 44 states
16,048 pets adopted
7,437 additional impact*

Total May Impact: 23,485

Summer July 6-31

330 shelters in 44 states
31,861 pets adopted
13,034 additional impact*

Total July Impact: 44,895

*pets adopted and transported to participating shelters in the week prior to the event, and adopted during the event at the shelter’s regular rate

Two more events are scheduled before the year ends, one in October and one in December, as well as emergency events when funding is available. Every pet who moves from a shelter to a loving home reminds us that the work we are doing across the country is making a difference and that together, we can save lives.

Donate to help more pets find love:
[bisselpetfoundation.org/donate](https://www.bisselpetfoundation.org/donate)



“Empty the Shelters” Happy Tails

Ward

Ward arrived at the McKamey Animal Center in Tennessee after being found in the aftermath of a hit and run. This sweet, lovable dog was paralyzed from the waist down. Despite being unable to use his legs or tail, his happy-go-lucky, resilient personality began to emerge as he learned to walk with a wheelchair.

After months of waiting, Ward’s wish for a loving family came true during a BPF Empty the Shelters event. To no one’s surprise, it was love at first sight. Ward can now wag his tail - something he was unable to do previously. His new family hopes that he will be able to walk again one day. Until then, Ward lights up when they get his wheelchair ready and loves to be on the move even without it!

Buzz and Loofy

Thanks to BPF’s Empty the Shelters, Buzz and Loofy, a bonded 5-year-old pair, not only went home, but went home together! In most cases, it is difficult for bonded pairs to find a home and

because Buzz and Loofy were a bit older, finding the perfect family was not easy. After being surrendered to the shelter, Buzz and Loofy waited patiently for a few months before they got their lucky break. Not only did they stay together, but they also have a new canine sibling who loves them as much as the rest of the family does.



“This event helped our shelter and allowed us to assist other organizations and dogs that normally would still be waiting for the right home!”

Lapeer County Animal Control, Lapeer, Michigan

Because Empty the Shelters is a proven lifesaving program, BPF implements events to assist shelters that face urgent situations due to overcrowding or an unexpected intake of pets. Thanks to your generosity, BPF was able to respond to shelter partners in need by funding nine emergency events so far in 2023 to save lives and create crucial space for pets at risk.

During the emergency “Find your Valentine” Empty the Shelters event, these deserving pets’ wishes for a home came true:

Scout

This sweet guy arrived at the shelter in terrible condition. It took several months to get him healthy enough to be adopted, just in time for BPF’s “Find your Valentine” ETS event. It was love at first sight for Scout’s adopter. Scout is now living his best life with a new dog sister who was also adopted during a previous event!



Bella

A transport for BPF’s February Empty the Shelters event made all the difference for this affectionate feline. She had been at the previous shelter for almost a year, which was hard to understand because she was so friendly and had the best personality. Bella hit the absolute jackpot! Her new family fell in love with her and was overjoyed to bring her home.

Thank you to everyone who made a donation to save lives with us.

October 1, 2022 - October 6, 2023

Please accept our heartfelt gratitude for believing in our mission and helping us save so many lives. Because of you, pets across the country are safe, healthy & loved.

\$500k+

BISSELL Inc.

\$250K - \$499,999

Dogtopia
Petco Love

\$100k - \$249,999

Pam & Jim DeFrancesco
Good Chaos
Life of Riley at Spring Point
MetLife
PetSmart Charities
Suzhou Ch'In-Hoo Cleaning
Equipment Co., Ltd.
Tito's Handmade Vodka

\$50k - \$99,999

20/22 Act Society
Ingrid V. Arneberg
Cris & Doug Crew
Deloitte
Norine, Steve & Ryan Roach
Root Wellness, LLC
Kimberli Scott
Lauren Simmons
Darwin Simpson
VS Industry

\$25k - \$49,999

Bob Clements
Guangdong Xinbao Electrical
Appliance Holdings, Co., Ltd.
Ann Hunt
Jim Offield
Barbara Pugh & Brian DeVries
Janice Zakin

\$10k - \$24,999

Elizabeth & Christopher
Blanton, Sr.
C.H. Robinson
Cinderson Tech
(Suzhou) Co., Ltd.
Jane Crisan
Tali Crozer
Carmel Fauci
Christine & David Field
Julie & Charles Frayer
Kay & Douglas Ivester
Scott Kilbourne
KingClean Electric Co., Ltd.
KPMG LLP
Meighan Offield
Mariana & Joe Parke
Race for Life Rescue
Rain the Growth Agency
SEARS ARCHITECTS
Shenzhen Silver Star Intelligent
Technology Co., Ltd.

Solomon Family Fund
Helene & Archie Van Beuren
William Howard Flowers Jr.,
Foundation
Holly Williams

\$5k - \$9,999

Kirby Bailey
Amber Balkema
Laurie Carr
CitiGroup
Kathleen Davis
Gregory DeLuca
Kathy & Greg Doerr
Flex
Fox Subaru
Haworth Helps
Robert & Pat Hemingway Hall
Andy Hill
Hurst Mechanical
Dana & Roger Jacks
Jellyfish
Molly Kircher
Susan & Brad Laffrey
McCann Worldgroup
Meijer
Midea Electric Trading
(Singapore) CO. PTE. LTD.
Sharon & Vincent Mihalik
Nestle Purina PetCare Co.
Shelby Norwich & Robert
Vander Weide
Lisa Ratliff
Glynn Ann & Michael Ruggeri
Emily Sexton
Patricia Shepard
Suzhou Mys Environmental
Protection &
Technology Co., Ltd.
Margaretta Taylor
The Hoffman Memorial
The Rock Foundation
Ross Vander Klok
YFY Jupiter

\$1k - \$4,999

A Dog's Life GR
Ada Dental Co.
Advanced Chemical Concepts
Advantage Benefits Group
Agiloft
Lena & Derek Alley
Dave Alphenaar
Ron Alvesteffer
Amazon Ads
CitiGroup
Shaun Anders
Anne Hunting Foundation
Aon
ARM: American Repair
Maintenance
Michelle & Jonathan Arnold
Auxo Investment Partners
Baker Donelson
Bank of America
Andres Baptista
Kip & Chris Barber
Barnes & Thornburg LLP

BDO USA LLP
Marilyn & Michael Best
Big Village Insights, Inc.
Cindy Bilisko
Adrienne & Max Bissell
Liza & Meric Bissell
Sherry & Dan Bowen
Brenneman Lea Companies
Brooktree Capital Management
Jeffery Brownell
Robyn Bruining
Buist Electric
Lilly Christy Busch Hermann
Stephanie Bush
C3 Technology Advisors
Donna Carruthers*
CBQ Kailian Holding Co., Ltd.
CDM Foundation
Channel Prime Alliance
Aleta Chase
Joseph Cheshire
Colleen Christman

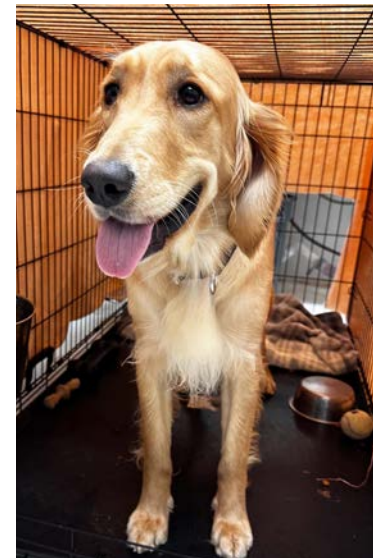


Comprehensive Property
Tax, LLC
Merrie Corbett
Mitch Crews
Criteo Corp.
Mimi Cummings
Curion
Kristin & Steven Davis
Penny & Laurence Deitch
Dept Design & Technology BV
Michael Desmyter
Terri & Scott Devon
Nancy Dodge
Nancy & Tom Doyal
Dunneback Fruit Farm LLC
Laurie Duthie & Mark Secchia
Eganix
Elkhorn Limited, LLC
Nancy & William Ellis
Frances Emerson
Thomas Emerson
Empower Retirement
Ernst & Young LLP
Evolve Creative
Lee & Jim Fabiano
Marisa Fahnenstiel
Family Investment & Resoure
Management, LLC
FedEx
Fido & Stitch
Fishbeck
Kelly FitzSimons
Foshan City Shunde
District Yi Shuang Mei Plastic
Products Co., Ltd.
Jean Frazier
Fujian SCUD Power
Technology Co., Ltd.
Barbara Fulmer
Gem Plastics, Inc.
Good Karma Consulting
Lauren & David Gorter
Grand Rapids Griffins
Grand Valley State University

Great Lakes Systems, Inc.
Deanna & John Green
Green Home Cleaning &
Restoration
Guild Mortgage - The Jonathan
Arnold Team
Orval Hallam
Nichole & Zach Hammer
Liliane A. Haub
Heart of West Michigan
United Way
Lindsay & Andy Hess
Holman Logistics
Honda Printing Holdings
Honigman LLP
Leslie A. & David S. Hooker
Laura & Robert Hughes
Huizhou Blueway Electronics
Co., Ltd.
Thomas Hulst
Hyper Transportation, LLC
Inland Packaging
Innotech Advanced Products
Limited
Interphase Office Interiors
J.P. Morgan
Erin & Jake Jackson
Debbi & Steve Janeck
Janie & Tim Jenkins
Jinhua Chunguang Technology
Co., Ltd.
Keri & Chris Kalish
Caryn & Brian Kersey
Kimberly Klintworth
Lisa Kozicki
Mary & Blake Krueger
Alissandra & Matthew Krueger
Mary & Jim Krzeminski
Darby Kuenzel
Rebecca Lacks
Jena & Kurt V. Lacks Family
Linda & Scott LaFontsee
Karen & Tracy Larsen
Lyndsi & John Lee

John Lemire
Rebecca Levack
Sandy & Kevin Little
Lori Lockyear & Ken Grashuis
Longood Intelligent
Macro Chemicals SDN BHD
Kathryn & Adam Madigan
Maersk
Judy Maggini
Bill Mahoney
Kylie Mahoney
Peter Marcus*
Gerald Marinoff
Marsh McLennan Agency
Andrew Martin
Mary J. McDonald
McGarry Bair
Erin & Aaron Medema*
Scott Meidema
Jason Miele
Lisa Miller
Jamie Mills & Jim Nichols
MSC Mediterranean Shipping
Company (USA), Inc.
David Narduzzi
National Association of
Professional Pet Sitters
New York Life Group Benefit
Solutions
NFI Industries
Teresa & Jim Nicholson
Nichole & Brad Nienhuis
Nouryon Surface
Chemistry, LLC
Peggy Novosad
Patricia Offenbach
Elizabeth Pacheco
Carol Paine-McGovern
& Terry McGovern
Kristen Perry
Jennie & Scott Perschbacher
Judy & Chip Perschbacher
Elizabeth Peters
Petzey

Plante Moran PLLC
Presidio Networked Solutions
Priority Health
Quinn Emanuel Urquhart
& Sullivan LLP
Josh Ralya
Rebel Reclaimed
Reed Smith
Maria & Sean Regan
Justin Remmelts
Sherri & Dale Remmelts
Resource Label Group
Kristina Rinaldi
Tamsen Roach
Robertet Fragrances, Inc.
Wayne Roberts
Rockford Bike Shop
Rhonda Rodgers & Bill
Tannenbaum
Jessica & Peter Ruppert
Ryder Systems, Inc.
Jim Saalfeld
Salesforce
Andrea & James Sandora
Scott Sangalli
Saugatuck Brewing Company
Lynn Scholten
Deb & James Sears
Service Express
Allison & Matt Sevensma
Shenzhen H&T Intelligent
Control Co., Ltd.
Shenzhen Topband Co., Ltd.
William Skinner
Catherine Slocombe
Speedmark Transportation, Inc.
Speridian Technologies
Hillary Spruit
Michael Stateczny
Stellar Reviews
Monica & Bo Stover
Megan Stubbs
Julie Sullivan



Sunstrong International
Industrial
SupplyPike
Lisa Sutter
Suzhou Enhanyr Advanced
Materials Co., Ltd.
Suzhou Hred Mat Co., Ltd.
Suzhou Yongjie Motor Co., Ltd.
Suzhou ZhanQiao Electric
Appliances Co., Ltd.
Margaret & Randy Talbot
Taspack Industrial SDN BHD
The Shippers Group
Robert Tigglerman
Uccello's Ristorante Downtown
Joel Van Winkle
Debra & Richard VanderZyden
Cynthia VanNoord
Vigilant Technologies, LLC
Anne Wallace
Barbara & John Wallace
Ward Law PC



Warner Norcross + Judd
Wells Fargo
Jamie Wilcox
Lise Williams
Barbara Wilson
Jason Wortendyke
WTW
YPO Goals Group
ZheJiang ZhaoHui Filter
Technology Co., Ltd.
Ted & Nancy Zwart

\$500 - \$999

AB Tasty
Arrowaste, Inc
Rose Bandeen
Barentz
Jacqueline Bartasius
Erika Berry
Patricia Blaser
William Blodgett
Lisa Bol & Matt Rizzo
BPV Environmental
John Bridges
Jennifer Brown
Chris Brown*
Jody & David Bucci
Chaco Footwear
CHEP USA
Circana
Steve Colletti
Christine Conway
Lillian Coolidge
Janene & Sam
Cummins
Lisa DeFrancesco
Sandra DeHaan*
Nicole DeLong
Delta Dental
Brad Ditmar
David Dow
Robert Doyle
Mary Jo Drueke

Theresa Dykhuis
Edmar Corporation
EG Workforce Solutions
Esaote North America
John Estabrook
Michael Fisher
Margie & Michael
FitzSimons
Ginnie Freeburn*
Friends Forever
Carol & Robert Gargaro
Kali Gargaro
Genbyte
Karen & Jeff Goudie
Peggy & John Graham
Katharine Gray
Great Lakes Label, LLC
Green Bay
Packaging, Inc.
Jennifer Greenop
Mary Anne & Robert
Hamilton
Yvonne Hinman
Amy & William Hoch
Douglas Hoerr*
Holland Special Delivery
Lindsey Hooker
Dana & Tyler Imhoff
Kyle & Win Irwin
Mari & Fritz Kruer
Laura Bower
William Lavick
Eva Lorenz
Gayle Lycos
Ben Masterson
Sandra Mathis
Karin & Greg McAleenan
Robin & William McNair
Jeffrey Miller
MMK, LLC
Morrison Industrial
Equipment Co.
Moss
Network For Good

Nichols Paper & Supply
Company
Karin Offield
Old Dominion
Freight Line
Jenny & Joe Parke
PolyOne Corporation
Chris Poteet
Debbie Priest
PURE Real Estate
Management
Mark Racanelli
Recon Corporation
Right Management
Rockline Industries, Inc.
Royal Freight
Ginger Ryser
Evelyn Searl
Shanghai Zhouhui
Electrical Co., Ltd.
Janna Shennan*
Skai
Sarah Slomski
Matthew Smith
Sharon Smith
Brandon Snider
Martin Sokalski
Tracy Souder
Springboard
Manufacturing
Wendy Swift
Shepard Swift
The Chiropractic
Doctors
The Insight Studio, LLC
The Remington Group
Vanderhyde Ford
Glorianne Vazquez*
Vetr Health
VGI
Lynn & Donald Ward*
West Michigan Janitorial
Gina White
Whitecaps Community

\$100 - \$499

3S LLC, DBA Great Clips
Kim Abrahamson
Randall Adams
Jayne Alford
Joan Allard
Heidi Amacher-Heinrich
Ingrid Anastasiu
Marcy Anderson*
Jay D. Anderson*
Jeannie Anderson*
Elaine Anderson
Kat & Nick Anderson
George Andrus
Laura Anklam
Lauren Aylsworth
Michael Azzollini
Janessa Baar
Josephine Backster
Anna Baeten
Catherine Baggs
Maureen Bailey
Kathy Baker
Craig Baldwin
Alexandria Barner
Baseline Construction
Thomas Beal
Clement Beaudoin
Carolyn Becker
Karen & Lee Begrow
Katrina Begrow
Suzanne Bell
Heather Bell
Edward Bement
Holly Bendily
Cecilia Berg*
Scott Bernecker

Nasreen Bhumbra*
Miriam Binder
Sally Binder
David Bird
Kathleen G. Bissell
Marianne Blaauw
Paula Blackard
Gabriele Blackledge*
Karen Blair
Kasey Blank
Justin Blevins
Jeanette Bliss
Denice Bocek
Elizabeth & Dan Bogo
Elizabeth Bond
Carilyn Booker
Noreen Boston
Katie Bourgois
Ahmé Bovée
Laura & Doug Brant
Robert Bridges
Daniel Brimhall*
Michael Brom
Kelly Brown
Carey Brown
Cathy Brubaker-Clarke
Samantha Bruce
Alan Bryant
Amy Bryant
Katherine & Monte Bryant
Cheryl Buchanan
Daniel Buckfire
Carole Bujel
Jennifer Burchardt
Amanda Burr
Michael Buschell
Katharine Butkowsky
Lisa & Dave Buursma
Florence Caldwell
Sharon Caldwell-Newton
Joan Campbell
LeAnne Cantwell

Joseph Carpenter
Thomas Carruthers
Stacie Carter
James Cartwright
Terry & Pat Casper
Melody Cassidy
T. Gaile Caudle
Leslee Cavanaugh
Linda Chambers
Kim & Jim Chiavaras
Mary Church
Lisa Claus
Katina Clausen
Rebecca Clem
Judy Cline
Michael Clurman
Kim Coles
Steve Collins
June Comer
Elissa Compton
Carol Cone
Susan S. Connelly
Joan Conry-Hart
Kristy Conwell
Christine Cooper
Juanita Copeland
Deb & Mike Corby
Kelly Corlew
Deborah Cornacchia
Mary Ann & George
Coroneos
Patricia Cowan
Marilyn Cracchiolo
Mary Crandall
Jennifer Crawford
Julie Creed
Phillip Croll
Steve Cuddleback
Michael Curtis
Angela Dahl
Debbie Dahlen
Lisa Daly
Peter Daly

Robert Davis
Martha Davis
Noel Davis
Renata De Paoli*
Susanne Defoe
Kelli DeMull
Linda DeSantis
Amanda DeVencenty
Nancy Devon
Rachel Dick
Robin Dickmann
Lori Diepstra
Daniel Doherty
Gary Donahoe
Brandon Donovan
Deborah Dorn
Cindy Douthett
Donna Dregger-Holmes
Marcus Drenth
Shelley Drew
Tammy Drew
Dave Drsicol
Susan Dubert
John Duiven
Noel Dybdal
Carla Dzurka*
Georgia Edsall
Edward Jones
Investments
Mary Egan-McGlynn
Sarah & Paul Elder
Cassandra Ellens
Peggy Ellens
Cynthia Elles
Suzie Elles
Sheila Elzinga
Judith Embry
Julie Endres
Fred Erickson
Mary & Phil Ernvall
Karen Evers
Valerie Fallon
Karen Fankhauser*

Najwa T. Faraj
Sharon Finkbeiner
Vicky Fisher
Alexa Fisher
Chelsea Fisher
Lisa & Will FitzSimons
Michelle Folkertsma
Nancy Forshaw
Gregory Forzley
Connie Foss
Dennis Foster
Sandra Fox
Harriette Frank
Bernice Franklin
Mary C. Frey
Debra Friday
Frontstream
Penny Gaffney
Kathy & James Ganley
Curtis Gano
Lenora J. Garrard
Scott W. Garvin
Karen Gdula
Amy & Brian Geers
Kimberly Genter
Susan & Andrew Gero
Marlow Geuin
Eric Gibbs
Michele Gidansky
Georgia Gietzen
Grace Gilmore
Jenifer Girgen
Brad Glendenning
Beverly Godding
Anne Gold
Kimberly Goodall
Dean Goodman
Barbara & William
Goodspeed
Darrow & Flip
Goodspeed
Molly Goodspeed
Mary Gorgis*

Janet & Michael Goyne
Shelby Grant
Michael Greengard
Lisa Greiner
Liz Griffith
Woodrow Griffith
Leslie Griswold
Mina Griswold
Kirsten Gross*
Rebecca Hailand*
Shannon Haley
Jane Hallberg
Sherryl Ava Halpern
Adrienne Halsey
John Ham
Jim Hamilton
Maggie Handlan
Joyce Hanks
Marilyn Hansford
Jackie Harbison
Chris Harmelink
James Harrison
Susan & Richard Hartger
Althea Hartsfield
Dick Haslinger
Rebecca Hawkins
Kristy Hawkins
Elise Hayes
Marianne Hayoz
Shannon Heads
Kathleen Heath
Anne Henderson
Lynn Henderson*
Robin Henderson
Susan Heneks
Charla Henney*
Elisha & Jody Henry
Edward Hersh
Andrew Hickey
Carol Hickey
Heather Hicks

Leslie Hilford
JoBeth Hill
Vickie Hinman
Lauren Hinton
Susan Hoffer
Cheryl Hoffman
Elizabeth Hoffman
Lee Hoffmann
Linda Hohn
Kristi Holland
Janice Hoover
Anne & Richard Horvitz
Jeannie Hosey
Frederick Howell
Jeanne Hutcherson
Joan Ingle
Interphase Office
Interiors, Inc.
Melissa James
Bonny Jasicki
Lynn Jazdyk
Kevin Jeakle
Johannah Jelks
Christine Jeryan
Tracy Jesser
Amy & John Horky
Liz & Mike Johnson
Margaret Johnson
Mark Johnson
Lauren Johnson
Victoria Johnston
Michael Joyce
Joyce Verkamp
Sue Jupp
Carolyn M. Kane
Kim Karrels
David Karrer
Amy & Jim Keane
Patricia Kearns
Jessica Keiser
Elizabeth P. Kenan
Melissa Kennedy
Wayne Kersey*





Michelle Kezner
 Roger Kiglin*
 Kim Ostrander
 Victoria Kimball
 Karen King
 Betsey Kingree
 Dagmar Kirsop
 Bonnie Klapper*
 Heatherjoy Klein
 Janice Klein
 Jennifer Knapp
 Lynne Knetlar
 Gloria Knittle
 Paige Knott*
 Victoria Kobza
 Kristin Kocher
 Aaron Koehn
 Christopher Koens
 Kimberly Kordecki
 Nicole Kosheba
 Sally Kotani
 Jane & John Kotwick
 Donita & Christopher Kraft
 Sheila & Richard Krell
 Claudia Krieg

Lauren Krieger
 Nancy Kronheim
 Mary Kunkler
 Jamie & Stephen Kusmierczak
 Cheryl Lamb
 Danielle Lamb
 Marisa Landsberg*
 Alixe Laughlin
 Meera Lee
 Bob Lee
 Dolly Lee
 Steve Leete
 Janine Lehmann
 Alana Lendvay*
 Alan Lengeman
 Paula Leonard
 Joe Lerner
 William Lewis
 Darlene Liebrock
 Pam Light
 Sherry Linde
 Nick Lo Vetere
 Katelyn Lokker
 Valerie & Hunter Lubeck-Wanty
 Rosie & Mark Ludtke*

Diane & Erik Luxhøj
 Cathryn Maillard
 Kimberley & Matthew Malinowski
 Karen Malvin
 Norma Mannix
 Irene Mantakounis
 Chris Manthei
 Leslie Marcello
 Christine Martin
 Elizabeth Martin
 Ronald Martin
 Kathi Mason
 Lisa Masterson
 Daniel Masterson
 Paula Mayo
 Julie McComb
 Karen McCready
 Cristina McCullough
 Claudia McDermott
 Allison McDonough
 Michael McGivney
 Pattie & Casey McGovern
 Deborah McGowan*
 Matt Mckee
 Marci McKenna
 Mallory McKnight
 Debbie MezMurrich
 Debra McTurk
 Jill Meehan
 Michael Melling
 Jill Mellott
 Jennifer Merryweather
 Stacy & Paul Mesman
 Carla & Eric Messing
 Maryellen Metcalf
 Linda Meyers
 David Meyers
 Sarah Mezwicki
 Jamie Miller
 & Rock Kauffman*
 Marcia Miller*
 Joan Miller

Louisa Miller
 Sylvia Mitchell
 Katrina Mocerri
 Teri Molyneux
 Monsma Marketing Corporation
 Cheryl Morgan
 Zach Mottes
 Marybeth Mulvey
 Anne Munford
 MaryLynn Murphy
 David Murphy-Colonna
 Carolyn Murry
 Maureen & Wilson Musser
 Gail Mussotto
 James Nawrocki
 Rebecka Nawrocki
 Ann Nazione
 Mary Nelson*
 Ellen Nelson
 Alexa Neumann
 Phuong Nguy
 Carol Nicholas
 Nick Nicola
 Lynn Niemi
 Christina Nienhuis
 Connie Norris
 Thomas Northrop
 Cynthia Novak
 Nancy Ochoa
 Naomi O'Dell
 Jayne Olderman
 Vera Olds
 Lauranne Oneil-Gallagher
 David Oreilly
 Violet Ori
 Tanya Oslund
 Scott Packer
 Phyzzie Page
 Audrey Palmitier*
 Syble Parr*
 Aaron Parrott
 Geralyn Pasi

Sarah Patton
 Megan Pearlman
 Elizabeth Pease
 Mike Pengelly
 Wendy & George Perrett
 Phyllis Perry
 Elizabeth & Chad Peters
 Kristina Peterson
 Michael Petrino
 Michael Pettibone
 Kenneth Phelan
 Alma Pickle
 Terri Pierce
 Julie Pigza
 Pledgeling Foundation
 Janet Poillon
 Mary Jo Pomeroy
 Fallon Powers
 Mary Naylor
 Hyacinth Prince
 Danielle Purslow
 David Quackenbush
 Charlene & Lou Quinn
 Souette Quinn
 Carly Quinn
 Cody Quinn
 Robert Rapley
 Mara Rasikas
 Saul Raw
 Kevin Read
 Dana Rebhun
 Erin & DeWayne Reed
 Karen Reid
 Diana Reitz
 Dan Rellis
 David Renner
 Toni Renninger
 Craig Ressel
 Maria Restrepo Forte
 Robert Reynolds
 Mark Riccardi*
 Suzanne Rieder
 Brenda Rinks
 Nena Ritchie

Emily Robin-Abbott
 Larry Robson
 Jacki Roderick*
 Victoria Romano
 Holly & Thomas Rowley
 Carol Rozen
 Susan Rubright
 Ruth & Sheldon Goldstein Foundation
 Christine Rydel
 Emily Rysberg
 Susan Sabala-Foreman
 John Salvino
 Katherina San Miguel
 Dolores Santucci
 Linda & Vern Saper
 Mary Beth Sawinski
 Laurie Schaeft
 Ruth Schaeft
 Karen & John Schankin
 Kimberly Schermer
 Brittany Schlacter
 Pamela Schrader
 Kerry & Mark Schrottenboer
 Schuil Coffee
 Kristin Schultz
 Marc Schupan
 Karl Schweighofer
 Jude Schwendenwien
 Marni Seid
 Serenity Now Realty, LLC
 Kaitlin Sheets
 Nikki & Rodney Shepherd
 Ann Sheridan
 Stacy Shorey
 Sandra Shuster
 Charles Sieger
 Sharon Sikkema*
 Randy Siller
 Katie Simon
 Marci Singer
 Beth & Greg Skau

Andrea Skidmore
 Victor Skloff
 Susan & Jack Smith
 Molly Smith
 Margaret Sokalski
 Chris Sommerdyke
 Karin Sorenson*
 Shay Stafford
 Marie Stearns
 Elizabeth & Alan Steger
 Theresia Stephan
 Anne & Mark Stewart
 Brenda & Earl Stringer
 Phillip Struble
 Erin Swindlehurst
 Sarah & David Tarnow
 Paul Taylor
 Diane Teall
 Maggie & Chris Teets
 Jane Textor
 Linda Thomas
 Michele Thomas
 Diana & Ed Throckmorton
 Phyllis Tinsley
 Tod Tobin
 Morgan Tomaszewski
 Kelly Tompkins
 Mary Tong
 Elizabeth Topp
 Debbie Townsend
 Bonnie Tria*
 Jenna & Zachary Trudell
 Allison Trumbull
 Jean Turbyville
 Uline
 Mary Ullmer
 Chloe Updegraff
 Todd Urbanski
 Bridget Usilton
 Angelica Vaanderlan
 Patricia Valenti-David
 Hayley Van Heck
 Noel Van Ness

J.C. Van Verre
 Lauren & Christian Vanderkaay
 Nathan Vanderploeg
 Gayle VanGessel
 Patricia Vani*
 Dawn VanVolkinburg
 Karen Vaughan
 Dennis Velie
 Brandy Vincent
 Carol Waite
 Michael Walters
 Bonnie Walters
 Nancy & George Wanty
 Jane & Michael Ward
 Mike Warren
 Maxwell Warren
 Elizabeth & Ronald Wasem
 William M. Watkins
 Justin Watzman
 Wayfair
 Roger Webb
 Allison Weed
 David Wetherell
 Rita Wheeler*
 Pam Wheeler
 Austin Wielenga
 Kevin Wilder
 Ben Wilke
 Sandy Williams*
 Wilson Realty LLC
 Winchester on Wealthy LLC
 Liz Winemiller
 Kathleen & Stephen Wisniewski
 Stephen Witte
 Alison Wohlust
 Allison Wolgast
 Jessica Wolterstorff
 Lora Wood*
 Sheila Wood
 Alica Woodrick
 Betty Wrightson

Ella Wynsma
 Jaclyn Yared
 Lori Yarnell
 Eric Young
 Donna Zalar
 Cindy Zarow

Michael Zimmer
 Dan Zink
 Brad Zylstra

***monthly donor**

Thank you to everyone who makes BISSELL Pet Foundation's work possible, including our National Shelter Alliance, our shelter and rescue partners, and our donors. We apologize for any errors and omissions. If your name is misspelled or needs to be updated, please email us at info@bissellpetfoundation.org so we can be sure to acknowledge you correctly in future listings. Unfortunately, due to space limitations, we are not able to list everyone who made a gift within the past 12 months.

Our Team

BISSELL Pet Foundation is a small but mighty team that is devoted to ending pet homelessness and creating the best outcomes for pets in need.

Cathy Bissell
 Founder

Kim Alboum
 Emma Allen
 Sarah Carlson
 Eliza Curtin
 Natalie Dixon
 Shelby Grant
 Rilee Greene
 Samantha Harter
 Elisha Henry
 Brittany Schlacter

Marci Singer
 Lauren Thomas
 Eric Thompson

Support Associates

Susan Laffrey
 Doralee Moes

Advisory Board

Sharon Mihalik
 Dr. Wendy Swift
 Helene Van Beuren



Bette, rescued from a puppy mill and received lifesaving parvo treatment before being adopted in September.



Ways to Give

Donor Advised Funds

Gifts from Donor Advised Funds are a great way to support the mission of BISSELL Pet Foundation to end pet homelessness.

Stocks/Mutual Funds

A gift of appreciated securities like stocks, bonds, or mutual funds is a great way to make your investments work for the good of homeless pets.

Give in Memory

Make a gift to commemorate a beloved pet or person.

Give in Honor

Show a special person how much they mean to you with a donation to impact pets.

Workplace Match

Double the impact of your gift! If your employer has a matching gift program, your gift could be matched dollar for dollar!

Cryptocurrency

Help pets by donating your Bitcoin (BTC), Ether (ETH), Litecoin (LTC), Bitcoin Cash (BCH), Z-cash (ZEC), Filecoin (FIL), Dogecoin (DOGE), or any tokens currently accepted on the Gemini Exchange.

Planned Giving

You can carry on your compassion for animals in need by including BISSELL Pet Foundation in your will, living trust, or retirement plan.



Donate Now

Our work is made possible because of you. Your generous support of BISSELL Pet Foundation's lifesaving programs reduces the number of pets in shelters and rescues across the country. **Please help us reach more pets in more communities by making a gift now.**

100% of your donation impacts pets in need, and now through December 31, every gift up to \$100,000 will be matched!

\$40

Help two cats get adopted through BPF's national Empty the Shelters event.

\$70

Spay or neuter two shelter dogs.

\$100

Spay or neuter four shelter cats or help two dogs get adopted through BPF's national Empty the Shelters event.

\$250

Transport two pets to a shelter with space and potential adopters.

\$400

Provide lifesaving treatment to two heartworm positive dogs.

\$500 or more

Make an immeasurable difference for a pet in need through BPF's lifesaving programs.

Want to make a lasting impact? **Please consider becoming a monthly donor.** Your commitment will create more success stories for pets in need.

Donate Now:
bissellpetfoundation.org/donate



BISSELL Blocktail Party June 3 and 4, 2024

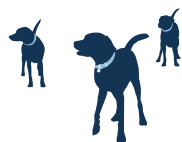
Save the date for the Best DOG-GONE Party in town! Blocktail is BISSELL Pet Foundation's premiere fundraising event, providing crucial support to save homeless pets across the country.

Be on the lookout for details about how you can party for a purpose with us soon!





Kenan, received a lifesaving second chance because of BPF transport.



BISSELL PET FOUNDATION®

2345 WALKER AVENUE NW
GRAND RAPIDS, MI 49544

NONPROFIT ORG
US POSTAGE
PAID
GRAND RAPIDS, MI
PERMIT NO. 793

Follow the faces of rescue:

FB: Cathy Bissell  and BISSELL Pet Foundation 

IG: @cathy_bissell  and @bissellpets 

bissellpetfoundation.org/donate

